

Kelsoft Ver 1.3.1 Guide

System Requirements:

Windows 7 or Higher

.Net Framework 4.5

AccessRuntime

AccessDatabaseEngine_32bit (if running 32bit OS)

To check : Control Panel – System and Security – System – SYSTEM TYPE

USB to RS232 DB9 Adaptor (*For Laptop connection*)

Install the following Programs:

1. Open folder Kelsoft Ver 1.0
 - a. Click - - > Setup
2. Open folder **ADDITIONAL PROGRAMS**
 - Install AccessDatabaseEngine_32bit
 - AccessRuntime
 - Install .Net Framework 4.5
3. **Restart Computer after installation of all Programs.**



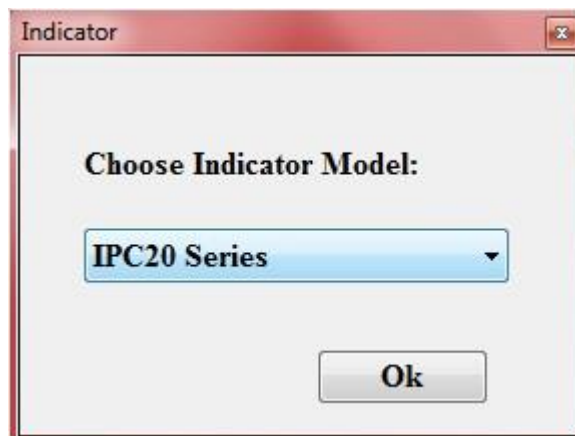
1. Start Menu - Open the Program
2. Code is Required before the program can be use. Send the code by email to technical@kelba.com

Tips: use copy and paste command

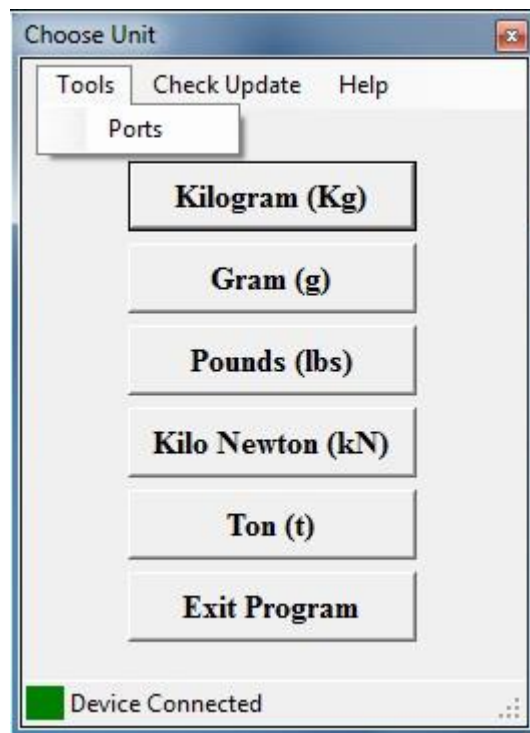
Highlight the code then using your keyboard Press and hold Ctrl C.

Open you email message editor, Press and hold Ctrl V.

3. Choose Indicator Model:

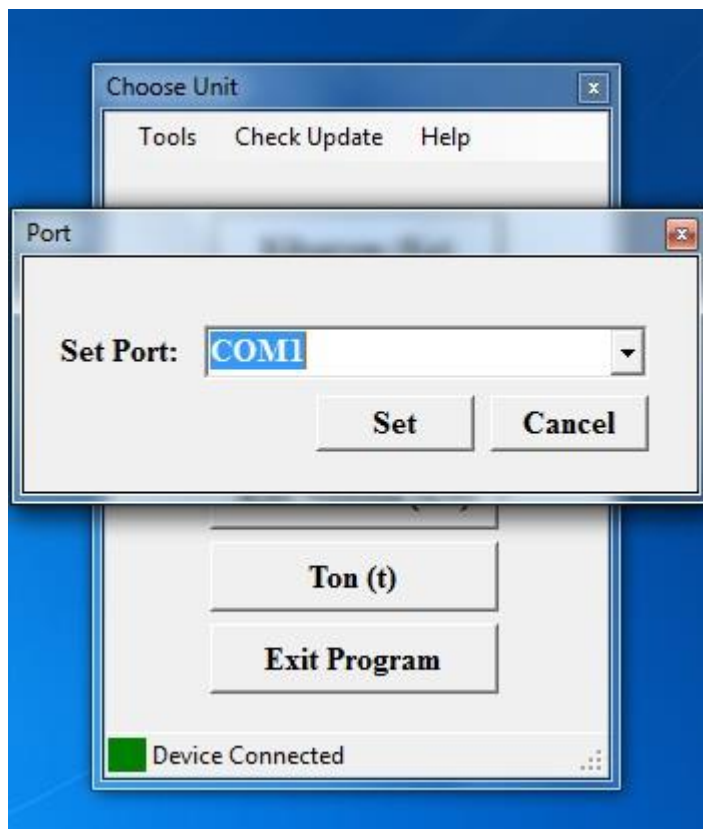


4. Click Tools – Ports



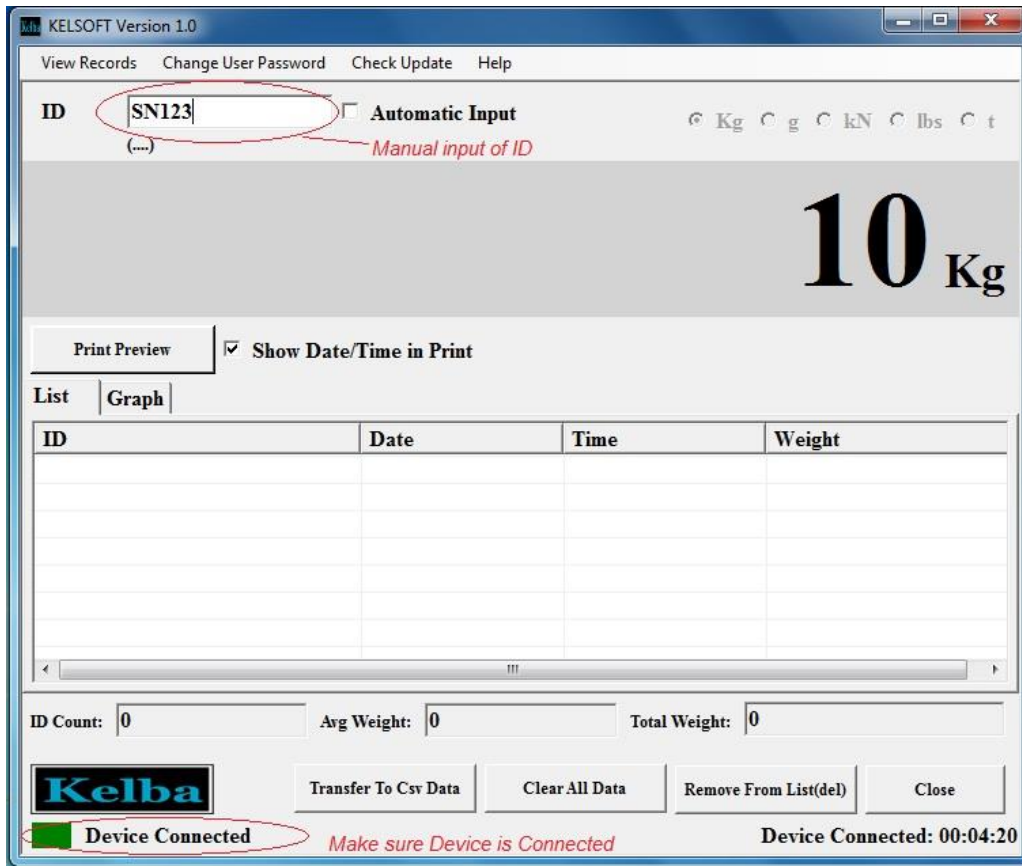
3. Change the COM port and click Set. Successful connection will show a GREEN BOX.

(Use dropdown arrow to select COM port where the indicator is connected.)



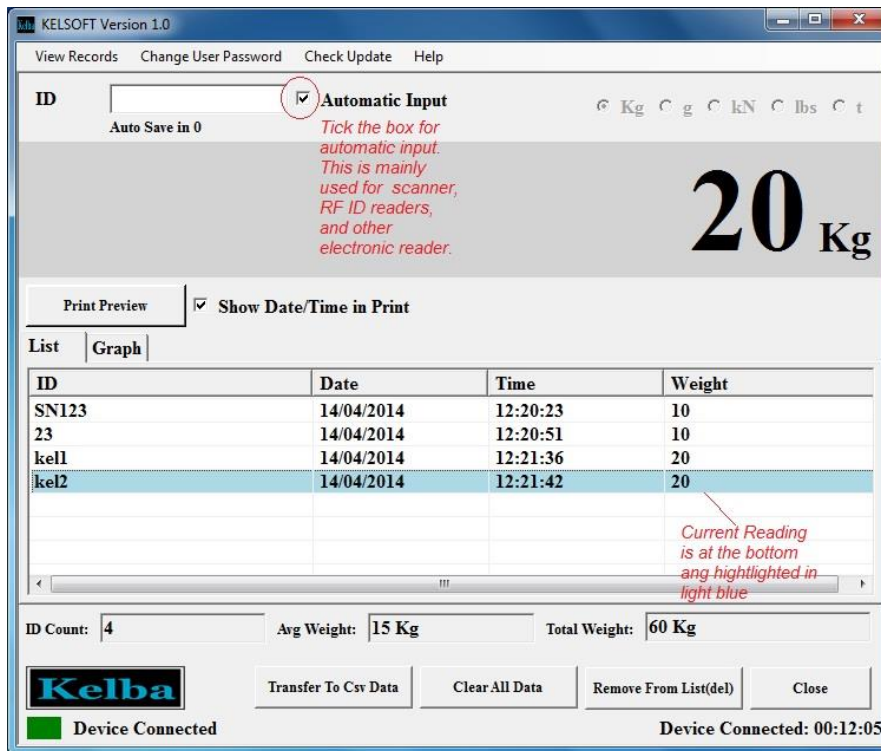
4. Recording of DATA will only start when an ID number is provided, This can be a combination of letters and number .

Input ID number by Typing into the ID box and Press "Enter" key to record the reading.



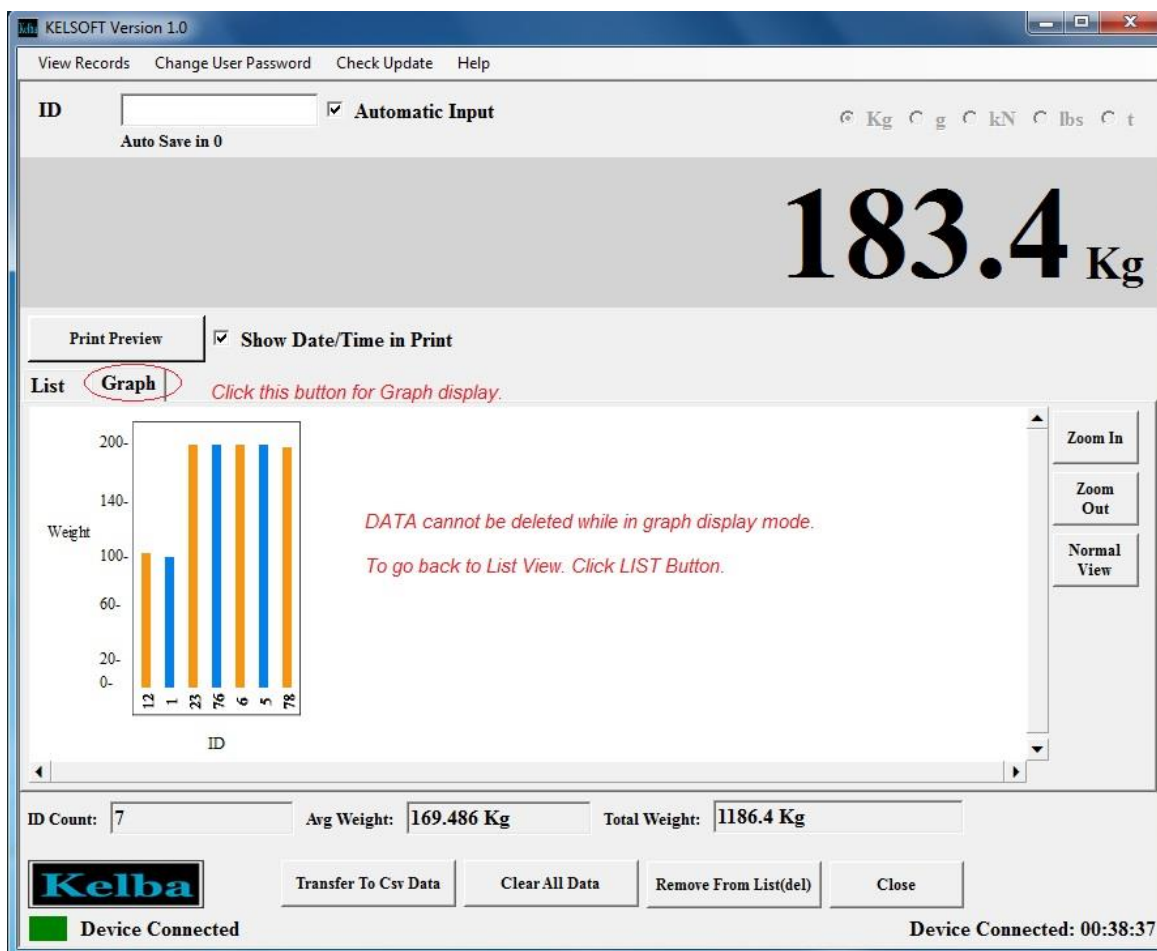
5. For Auto Recording, Tick the Box next to Automatic Input. While the box is Tick, The ID can be inputted manually but has to be done very fast before it will start saving.

Automatic Reading is very useful if using RF ID reader, Scanner.



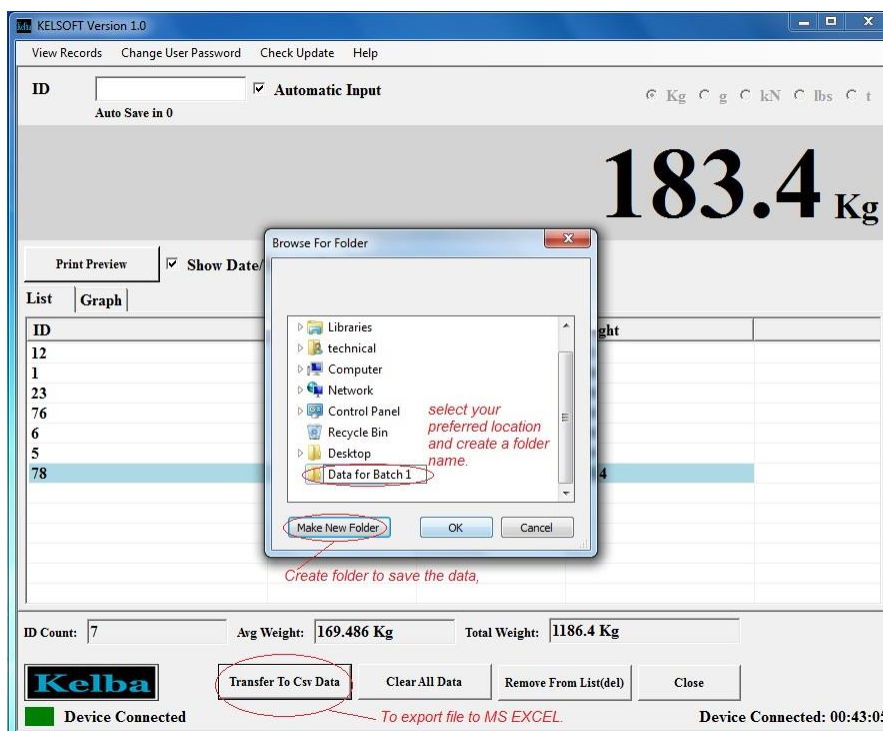
Data Highlighted in Light blue at the bottom indicates the current reading.

Click the GRAPH button to display the current recorded reading in graph.



6. To export DATA

- Click TRANSFER TO CSV DATA
- Select the location to save the data.
- Make New Folder
- Rename the folder
- Ok



7. Deleting Data

- Double click the Data. Data will be highlighted in Blue.
- Press Delete from your keyboard (or click Remove from List Button)

The screenshot shows the KELSOFT Version 1.0 software interface. At the top, there is a menu bar with options: View Records, Change User Fassword, Check Update, and Help. Below the menu bar, there is an ID input field and a checked box for Automatic Input. The main display area shows a large weight reading of 130 Kg. Below this, there is a checkbox for Show Date/Time in Print, which is checked. A table with columns ID, Date, Time, and Weight is displayed. The table contains four rows of data, with the first three rows highlighted in blue. Below the table, there are summary statistics: ID Count: 4, Avg Weight: 15 Kg, and Total Weight: 60 Kg. The Kelba logo is visible at the bottom left, and the status bar shows Device Connected and Device Connected: 00:22:38.

Tick this box if you want to display Date/Time in Printing

Highlight data to be deleted. For multiple deletion, Keep Pressing CTRL key and select the data to delete.

ID	Date	Time	Weight
SN123	14/04/2014	12:20:23	10
23	14/04/2014	12:20:51	10
kel1	14/04/2014	12:21:36	20
kel2	14/04/2014	12:21:42	20

Displays the number of ID being recorded

Total weight of the current ID being recorded

ID Count: 4 Avg Weight: 15 Kg Total Weight: 60 Kg

Kelba Transfer To Csv Data Clear All Data Remove From List(del) Close

Device Connected Device Connected: 00:22:38

To **Clear all DATA**, simply click CLEAR ALL DATA button.

8. To **Close Program**, simply click the CLOSE button – Exit Program.