

# Kelba 25T & 35T Double Ended Shear Beam Load Cell & Tank / Silo Weighing Module

## STANDARD CAPACITES

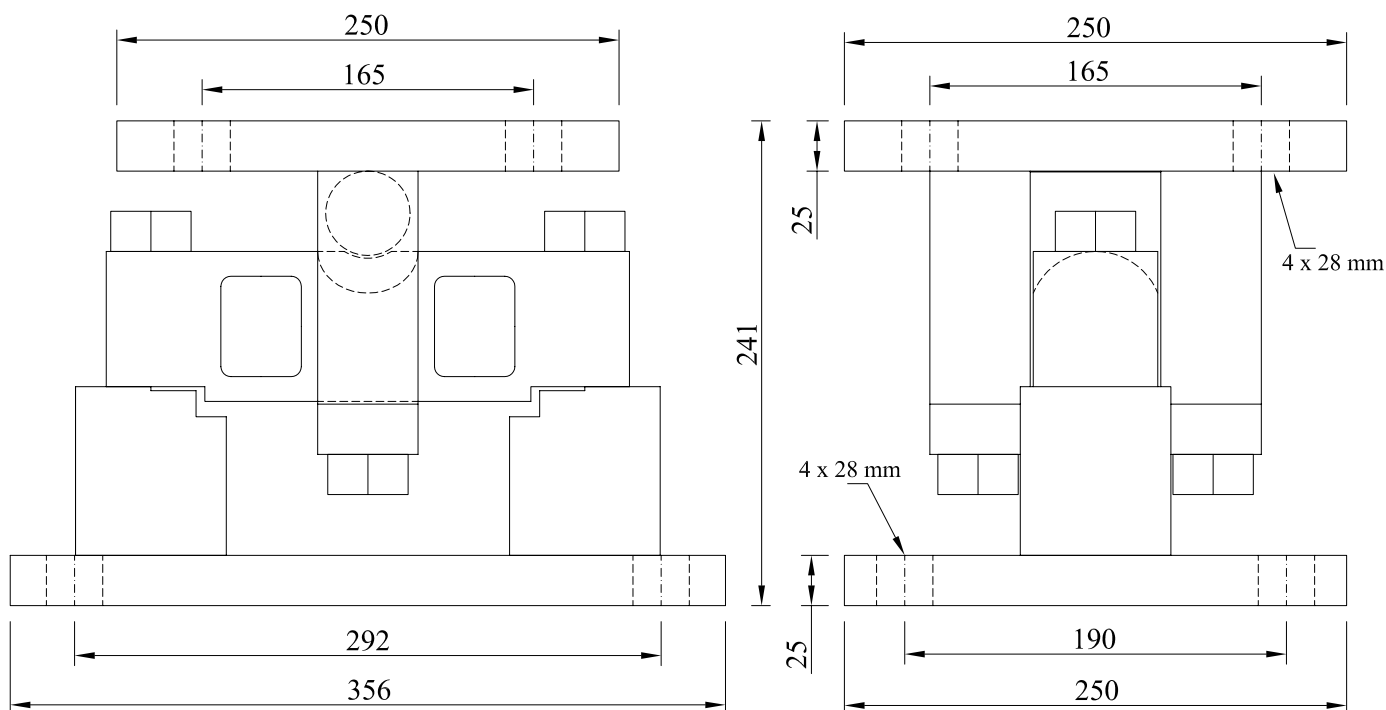
25000 kg & 35000 kg

## SPECIFICATIONS

Rated Output	3.00 mV/V $\pm$ 0.25%
Accuracy class	0.03
Non-linearity	0.03 % F.S
Hysteresis	0.03 % F.S
Non-repeatability	0.02 % F.S
Creep in 30 minutes	0.03 % F.S
Temperature effect span	15 PPM / °C of applied Load
Temperature effect zero	26 PPM / °C of applied Load
Compensated temperature range	- 10°C ~ 40 °C
Operating temperature range	- 40°C ~ 65 °C
Zero balance	$\pm$ 1 % F.S
Input resistance	770 $\pm$ 40 $\Omega$
Output resistance	700 $\pm$ 5 $\Omega$
Safe overload	150 % F.S
Ultimate overload	300 % F.S
Excitation voltage	10 VAC/DC
Maximum excitation voltage	30 VAC/DC
Insulation resistance	> 5000M $\Omega$ (50 V DC )
Environmental protection	IP67
Material	Alloy tool steel
Cable length	9 Mtr

## Wiring Color Code

Excitation +	Red	Signal +	Green
Excitation -	Black	Signal -	White



\* Self checking easy to use design allows module to be bolted directly to tank leg with out requiring additional mounting plates or load buttons

\* Environmentally protected load cell

\* Double - ended shear beam design , center loaded

Kelba (Australia) Pty Ltd					
Reference		KELBA "KDSB"			
Date	21/11/04	25T & 35T			
Drawn	A TRUCKNER				
Approved		Drg. No.	KDSB-25/35	Rev.	1
Scale	NTS			Date	21/11/04