

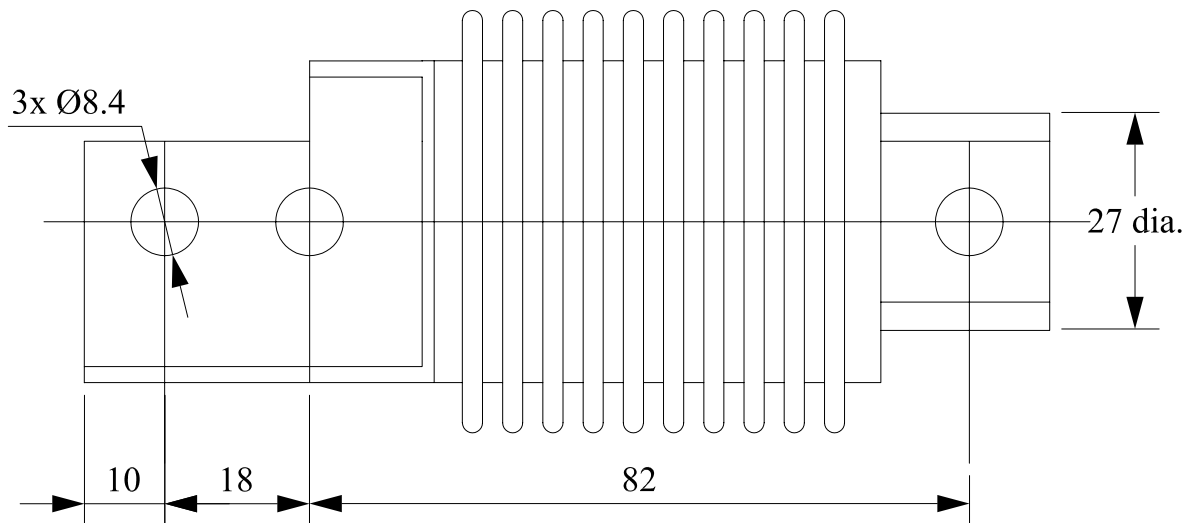
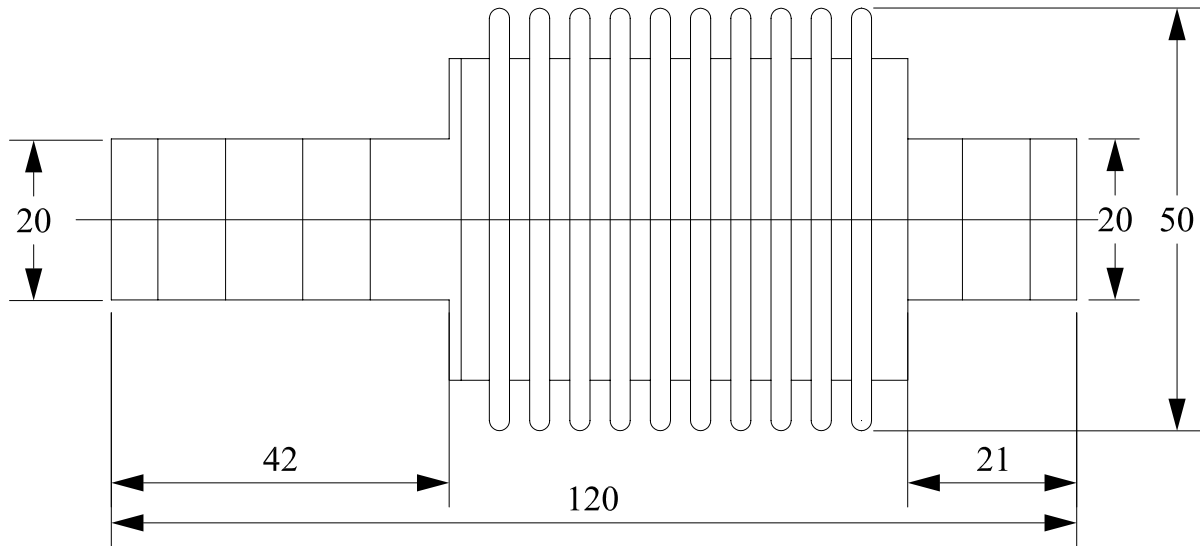
Kelba Bending Beam Load Cell KPA 6142

STANDARD CAPACITIES

20 , 50 , 100 , 200 kg

SPECIFICATIONS

Rated Output	2.00mV/V \pm 0.1
Accuracy class	0.03
Non-linearity	0.03 % F.S
Hysteresis	0.03 % F.S
Non-repeatability	0.02 % F.S
Creep in 30 minutes	0.03 % F.S
Temperature effect span	15 PPM / °C of applied Load
Tempature effect zero	26 PPM / °C of applied Load
Compensated temperaturer range	- 10°C ~ 40 °C
Operating temperature range	- 40°C ~ 65 °C
Zero balance	\pm 1 % F.S
Input resistance	385 \pm 15 Ω
Output resistance	350 \pm 3 Ω
Safe overload	150 % F.S
Ultimate overload	300 % F.S
Excitation voltage	10 VAC/DC
Maximum excitation voltage	15 VAC/DC
Insulation resistance	> 5000M Ω (50 V DC)
Environmental protection	IP68
Material	Alloy tool steel
Cable length	6 Mtr



Wiring Color Code

Excitation + Red	Signal + Green
Excitation - Black	Signal - White

Kelba (Australia) Pty Ltd

Reference		KPA 6142 Bending Beam Load Cell			
Date	24/04/03				
Drawn	A . Truckner				
Approved		Drg. No.	KPA -6142 -1	Rev.	1
Scale	NTS			Date	21/05/04