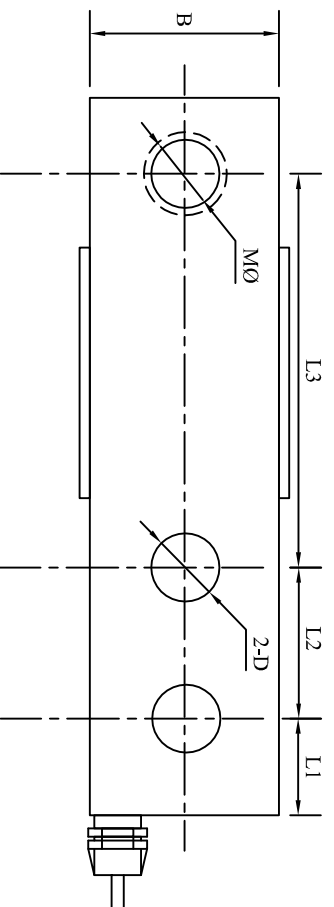
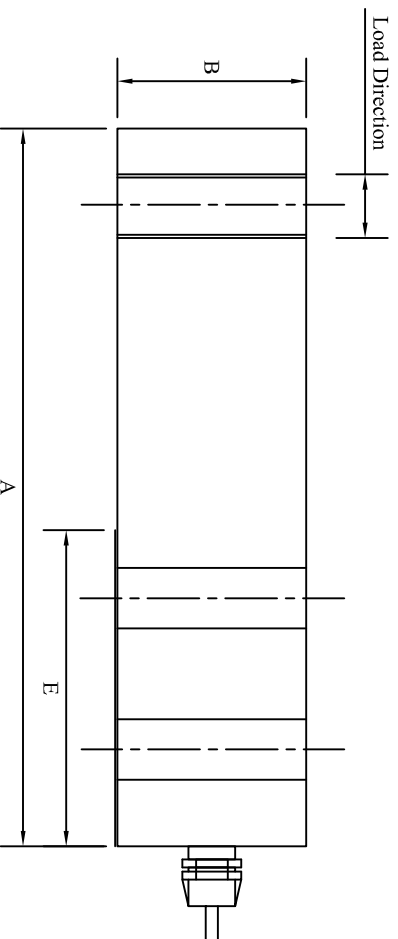


# Kelba Shear Beam Load Cell (100-10000 Kg)

## KPA 6140



Size: mm

Model	Capacity	A	B	D	E	L1	L2	L3	M
KPA 6140 - 100	100 kg								
KPA 6140 - 300	300 kg								
KPA 6140 - 500	500 kg								
KPA 6140 - 1000	1000 kg	130	32	13	57	16	25	76	M12
KPA 6140 - 1500	1500 kg								
KPA 6140 - 2000	2000 kg								
KPA 6140 - 3000	3000 kg								
KPA 6140 - 5000	5000 kg	171	38	21	76	19	38	95	M 20
KPA 6140 - 7t	7000 kg								
KPA 6140 - 10t	10000 kg	226	51	25	102	25	51	124	M24x2

### General Specifications:

Standard Capacity: 100, 300, 500, 1000, 1500, 2000  
3000, 5000, 7000, 10000 kg

Material: Alloy Tool Steel

### Electrical:

Cable Length: 6 Meters  
Rated Output: 3.00 mV/V $\pm$  0.25%  
Accuracy class: 0.03  
Non-linearity: 0.03% F.S  
Hysteresis: 0.03% F.S  
Non-repeatability: 0.02% F.S  
Creep in 30 minutes: 0.03% F.S  
Temperature effect span: 15PPM/°C of Applied Load  
Temperature effect zero: 26 PPM/°C of Applied Load  
Compensated temperature range: -10 °C ~40°C  
Operating temperature range: -40°C ~65°C  
zero balance:  $\pm$  1% F.S  
Input resistance: 350  $\pm$  15 ohms  
Output resistance: 350  $\pm$  3 ohms  
Safe overload: 150% F.S  
Ultimate overload: 300% F.S  
Excitation Voltage: 10V AC/DC  
Max Excitation Voltage: 15V AC/DC  
Insulation resistance:  $\geq$  5000M ohms (50V DC)  
Environmental Protection: IP67

### Wiring colour code:

Excitation + Red  
Excitation - Black  
Signal + Green  
Signal - White

## Kelba ( Australia ) Pty Ltd

Reference	KPA 6140 Shear Beam Load Cell 100kg - 10000 kg	
Date	1/2/2010	
Drawn By	J. Daggang	
Approved		Drg No. KPA - 6140-1
Scale	NTS	Rev Date 2 1/2/2010